

ECM Modular

The Modular series (ECM) is a robust range of rectangular containers in short and tall versions, which are easy to open and (re)close. The ECM containers have strong, ergonomic handle grips, making them easy to transport. Containers in the ECM series increase your storage capacity and reduce the transport volume and shelf space you require. They have been designed to be nestable and interlocking.

| Product | Volume (liter) | Volume (litre, exact) | Outside measurements, excl. lids | | |
|-----------|----------------|-----------------------|----------------------------------|------------|-------------|
| | | | Length (mm) | Width (mm) | Height (mm) |
| ECM 600 | 0,6 | 0,60 | 192 | 129 | 40 |
| ECM 750 | 0,75 | 0,75 | 192 | 129 | 49 |
| ECM 1000 | 1 | 1,3 | 143 | 126 | 96 |
| ECM 1200 | 1,2 | 1,2 | 192 | 129 | 73 |
| ECM 2000 | 2 | 2,0 | 225 | 165 | 76 |
| ECM 3000 | 3 | 3,1 | 288 | 193 | 92 |
| ECM 4000 | 4 | 4,0 | 225 | 165 | 152 |
| ECM 6000 | 6 | 6,4 | 290 | 198 | 169 |
| ECM 10000 | 10 | 10,4 | 288 | 187 | 273 |
| ECM 10400 | 10 | 10,4 | 285 | 194 | 272 |
| ECM 11000 | 11 | 11,6 | 288 | 191 | 304 |
| ECM 12000 | 12 | 13,2 | 394 | 288 | 159 |
| ECM 16000 | 16 | 18,0 | 387 | 286 | 217 |
| ECM 18000 | 18 | 21,0 | 384 | 296 | 252 |
| ECM 20000 | 20 | 22,1 | 386 | 285 | 274 |
| ECM 25000 | 25 | 28,0 | 387 | 291 | 348 |
| ECM 33000 | 33 | 37,0 | 383 | 282 | 445 |

Materials

Produced from prime-grade materials, PP & PE. All materials are food grade approved and coloured master batch, cadmium free.

Colour

Available in white as standard.
Transparent and colours made to order.

Conditions

All products are produced under BRC/IoP regulation, according to HACCP standards.



Visiting address:

HK PLASTICS B.V.
Bedrijvenpark Twente 96
NL - 7602 KD ALMELO

Postal address:

HK PLASTICS B.V.
Postbus 22
NL - 7640 AA Wierden

T: +31 (0)88-2402400
F: +31 (0)88-2402440
E: sales@hk-plastics.com

ECM-2000

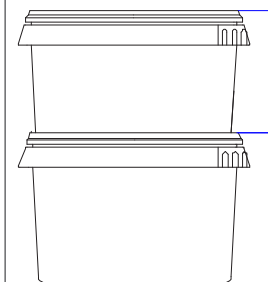
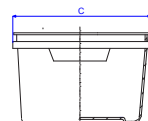
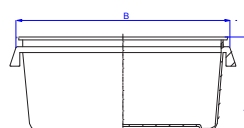
Basic data:

| | |
|----------------------------|----------|
| Contents: | 2 liters |
| Exact capacity: | 2 liters |
| Weight container: | 61 grams |
| Weight standard lid: | 28 grams |
| Dimensions tolerance: | +/- 1 mm |
| Volume / weight tolerance: | +/- 5% |



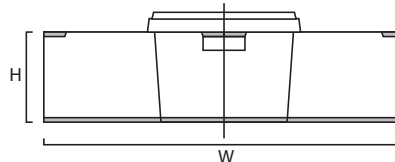
Dimensions:

| | |
|-------------------------------|----------|
| Height (A): | 75,5 mm |
| Length (B): | 225 mm |
| Width (C): | 165 mm |
| Width including handle grips: | 225 mm |
| Nesting gap: | 19,36 mm |
| Height with lid (D): | 77 mm |
| Stacked height with lid (E): | 72 mm |



Decoration (maximal dimensions):

| | | |
|---------------------------------|----------|-----------|
| Height: | IML-lid: | 147,49 mm |
| Width (long side for off-set): | | 209,49 mm |
| Width (short side for off-set): | | |
| (CTC): | | |
| No. of printed sides: | | |



Standard pallet configuration

| | |
|--------------------------|------------|
| Containers on pallet: | 2640 pcs. |
| Layers per pallet: | 2 |
| Stacks per layer: | 30 |
| Total per stack: | 44 |
| Pallet Height: | 2100 mm |
| Pallet Height with lids: | 2500 mm |
| Lids on pallet: | 13200 pcs. |

Lid variations:

| |
|-------------------|
| Standard lid: yes |
| Premium lid: no |